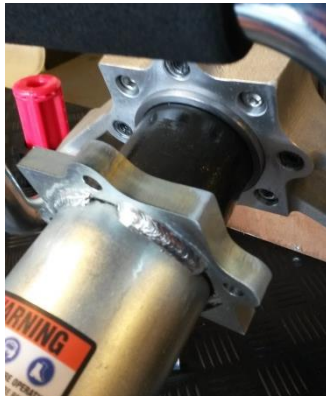


# Changing an adapter – Rental-Pro

---



1. Place the machine firmly down. Remove the Locking nut and adapter from the chuck.



2. Turn loose the bolts with included allen key and remove the chuck.



3. Clean the new adapterplate bolts and the boreholes on the machine with Loctite 7649.



4. Place the adapterplate (only for adapter 301405, 301403 and 301415) with the ingrained edge to the machine.



5. Add Loctite (Loctite 243) on the bolts and place bolts. Tighten the bolts securely.



6. Clean the boreholes in the adapterplate and the bolts included on the adapter with loctite 7649.



7. Place two rings on each bolt, with the convex side up. Add Loctite 243 on each bolt.



8. Place the adapter, with the sticker to the front and tighten the bolts securely.



9. The adapter has been placed and is ready to use.